



# MatriVideo™ Command Center

## Quick Installation Guide

### I. Preparation

Please prepare following equipments before starting the system installation.

- Three monitors
- Speakers
- Network environment

### II. Box Contents

Inspect the packaging carton. Make sure your MatriVideo Command Center is properly delivered to you.

Remove all items from the box and make sure that the box includes the following items:

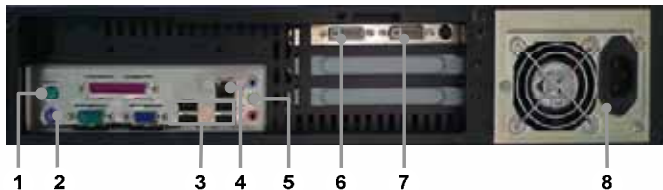
- **MatriVideo Command Center** x1
- **Triple-VGA Connector** x1
- **Keyboard** x1
- **Mouse** x1
- **Power Cable** x1
- **Document CD** x1
- **Windows XP CD** x1
- **Warranty Card** x1
- **Registration Card** x1

### III. Unit Introduction

#### Front Panel



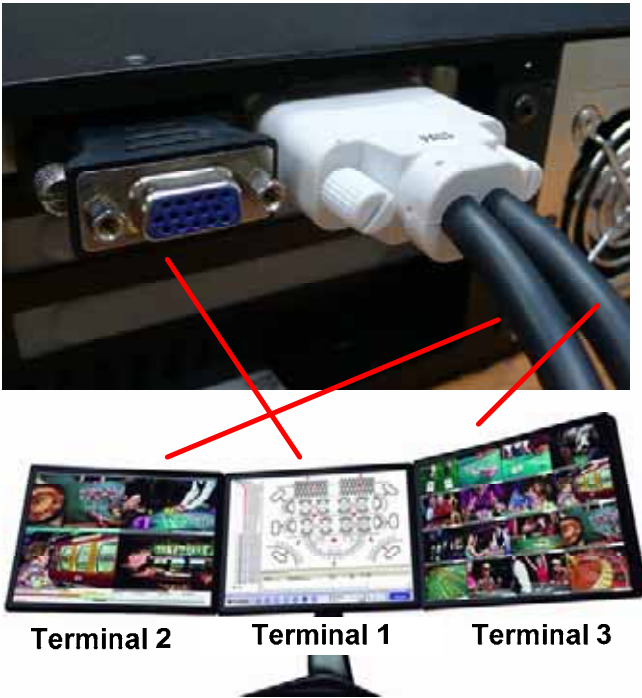
#### Rear Panel



1	Mouse (PS/2)	5	Speaker
2	Keyboard (PS/2)	6	Monitor 1 (VGA Connector A)
3	USB 2.0/1.1 Ports	7	Monitor 2&3 (VGA Connector B)
4	Ethernet (RJ45)	8	Power Socket

**VI. Get Started**

**1. Basic Connection**



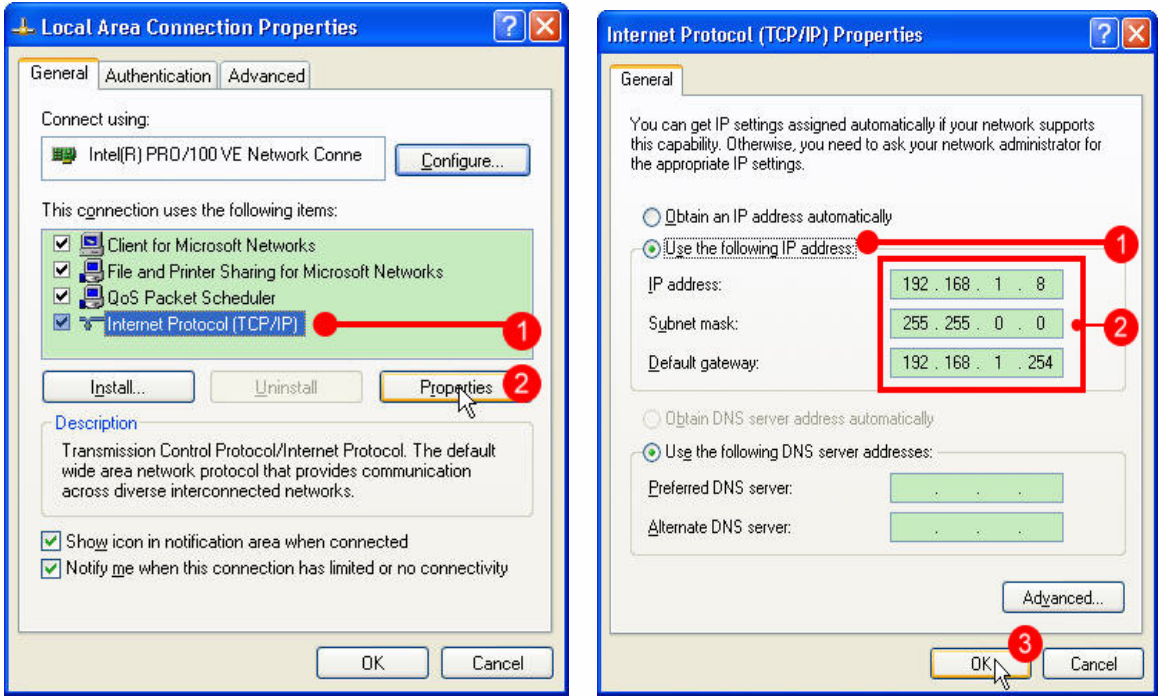
- a. Connect the VGA connector A with VGA **converter** and Terminal 1 (T1).
- b. Connect the VGA connector B with VGA **splitter** and Terminal 2 (T2) and Terminal 3 (T3).
- c. Connect keyboard and mouse.
- d. Connect speakers if necessary.
- e. Connect to Network.
- f. Connect Power cord.

**2. Unit Boot-up**


- a. Power on MatriVideo Command Center.
- b. Enter Windows XP OS. *Default password: id*

**3. Windows Basic Configuration**

- a. Adjust Windows OS Time Zone from “Control Panel > Region and Language”.
- b. Configure network setting before entering Command Center application.



**4. Command Center Basic Configuration**

- a. Execute “Command Center”  on Windows desktop.
- b. When first running the Command Center, user needs to subscribe at least one DVR/ NVR. Follow the Command Center Configuration Wizard for basic configuration.



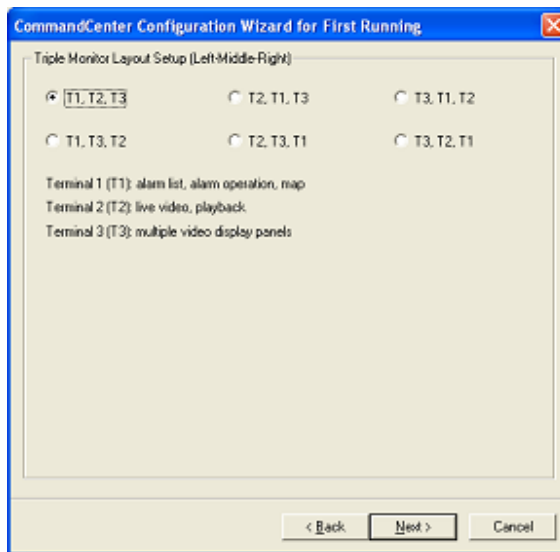
- c. Command Center is a triple monitor display application. Each monitor has its own purpose defined as below:

Terminal 1 (T1): providing operational functions of camera tree, alarm list, alarm operation, map and so on.

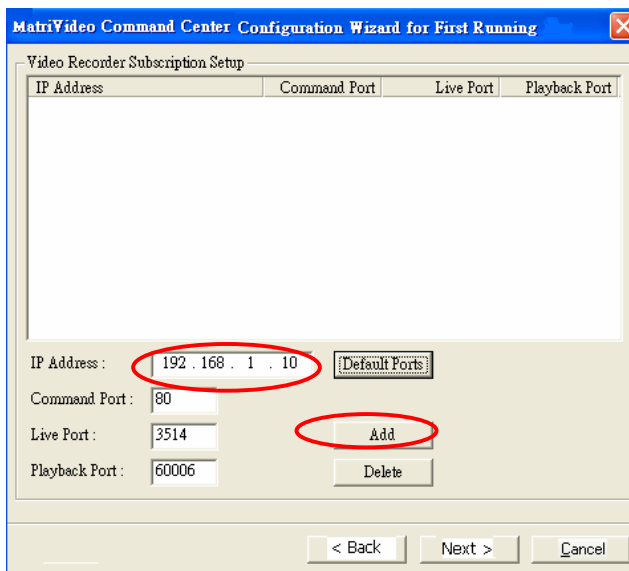
Terminal 2 (T2): providing live video, playback, and media bar.

Terminal 3 (T3): providing multiple video displays.

- d. User can assign the monitor layout of Command Center on your preference.



- e. Input DVR/ NVR IP address and add it into video recorder subscription list.



- f. Finish the Configuration Wizard and login to Command Center.

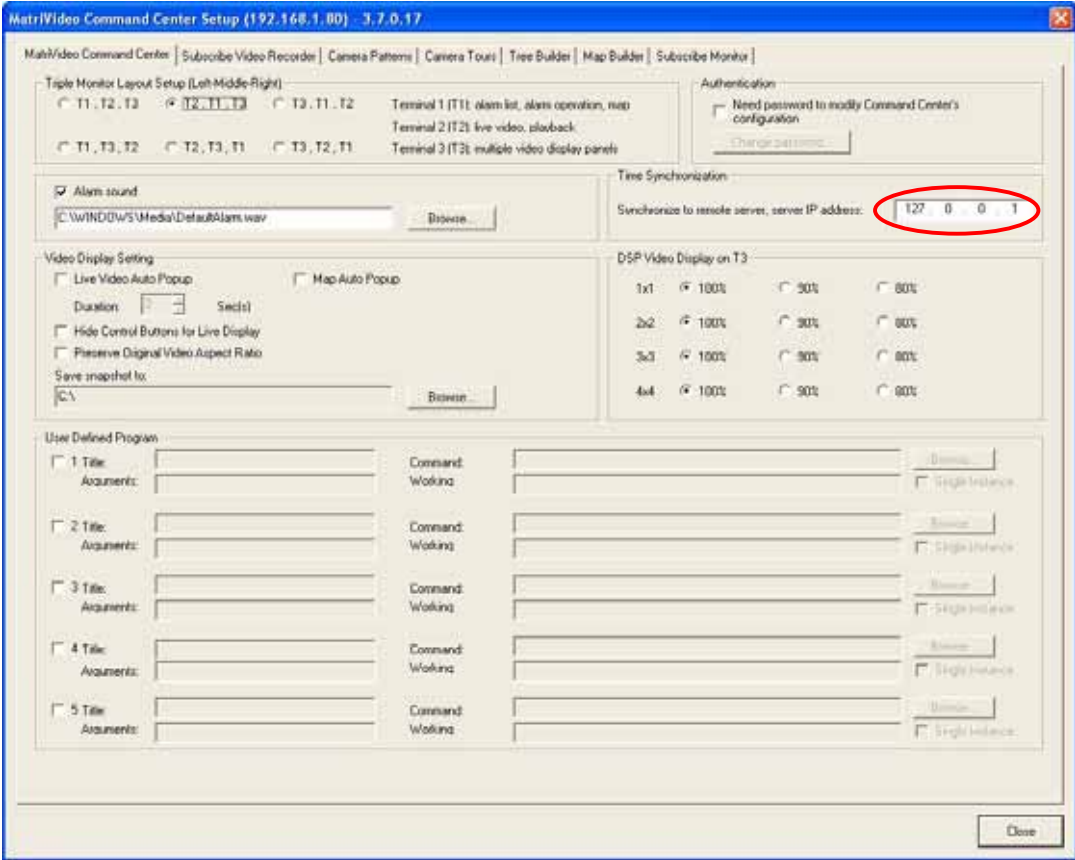
Default username: **admin**, password: **id**

**NOTE:** User name and password are case sensitive.

The MatriVideo adopts the authority portfolio management. Every hDVR has its own account and user management. The system administrator may separately set up and manage the authority for every account in every hDVR.



g. Click the Command Center Configuration button on T1 and type in the Time Server IP address



**Note:** Time Synchronization is for system time sync only, not including Time Zone adjustment. Please make sure the Time Zone is correct.