

# User Manual For Playback Analysis Software Mobile Digital Video Recorder



©Copyright 2009-2010, XTSCORP.  
All Rights Reserved

## **NOTICE**

The information in this manual was current when published. The manufacturer reserves the right to revise and improve its products. All specifications are therefore subject to change without any notice.

The purpose of this manual is to kindly aid the user for the MDVR CMS installation and setup.

**This CMS installation manual is for XTS-MDVR9304, XTS-MDVR9404, XTS-MDVR9504, XTS-MDVR9604 and XTS-MDVR9608.**

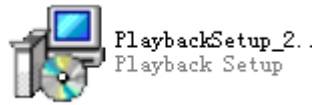
## **Copyright**

Under copyright laws, the content of this manual may not be copied, photocopied, reproduced, translated or reduced to any electronic medium or machine-readable form, in whole or in part, without prior written consent of XTSCORP ©Copyright 2009-2010, XTSCORP.

# CONTENT

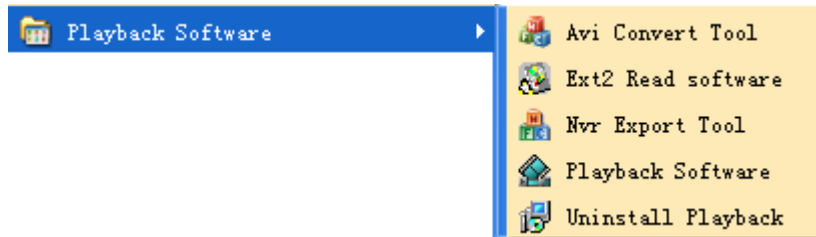
<b>1</b>	<b>Installation.....</b>	<b>1</b>
<b>2</b>	<b>PAS GUI.....</b>	<b>3</b>
<b>2.1</b>	<b>Main bar .....</b>	<b>4</b>
<b>2.1.1</b>	<b>File.....</b>	<b>4</b>
<b>2.1.2</b>	<b>Setting.....</b>	<b>4</b>
<b>2.1.3</b>	<b>Event .....</b>	<b>9</b>
<b>2.1.4</b>	<b>Help .....</b>	<b>10</b>
<b>2.2</b>	<b>Video window.....</b>	<b>11</b>
<b>2.3</b>	<b>Meta data Window .....</b>	<b>13</b>
<b>2.4</b>	<b>Log window .....</b>	<b>14</b>
<b>2.5</b>	<b>Map window .....</b>	<b>14</b>
<b>3</b>	<b>AVI convert tool.....</b>	<b>16</b>
<b>4</b>	<b>NVR Export tool.....</b>	<b>19</b>

# 1 Installation

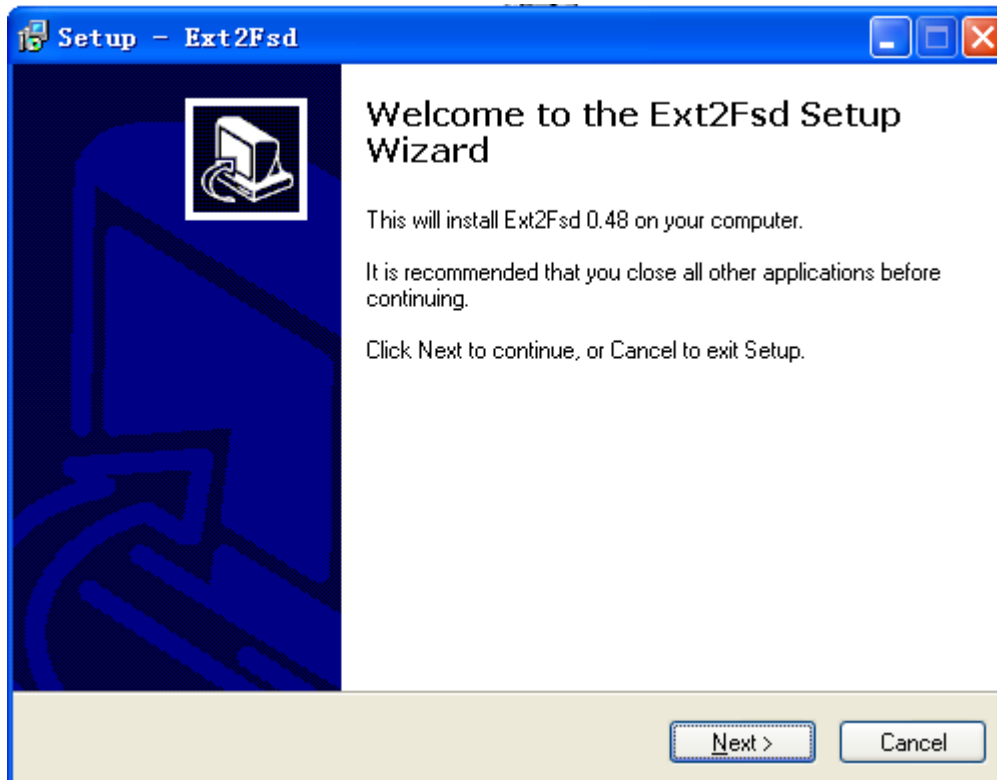


Please double click the install program to start the installation. And choose NEXT to finish it.

After the install the PAS, there will be 5 parts:

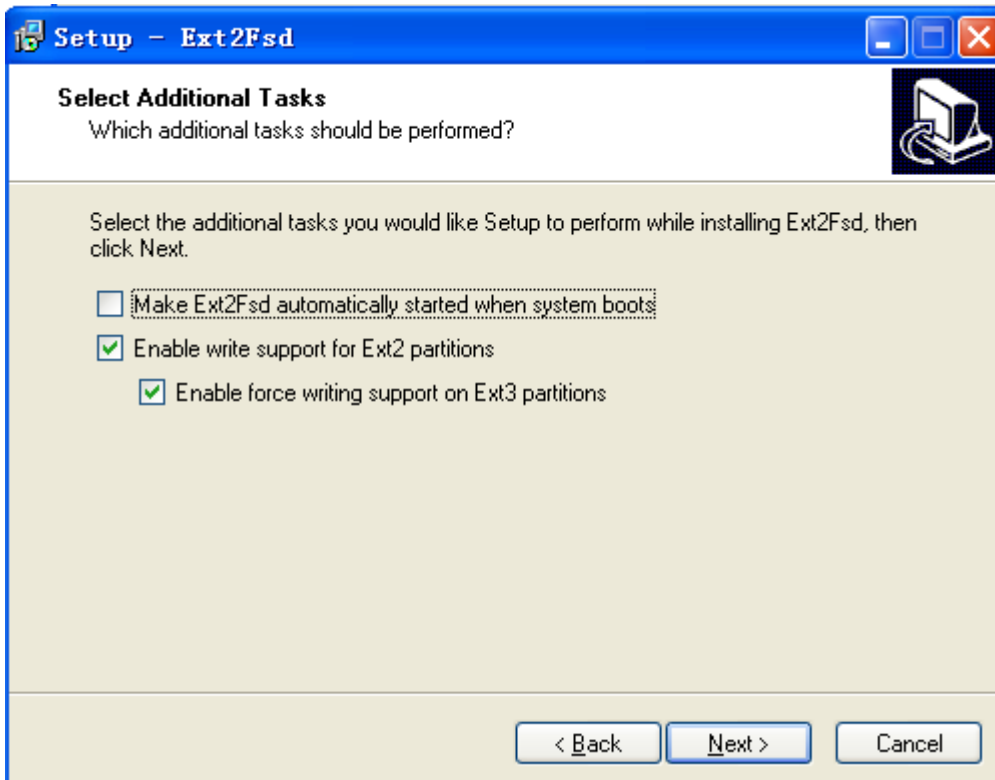


Please choose the Ext2 Read software to install it. Because of our special file system, when you insert the SD card or connect the HDD to your computer, maybe the computer can not detect it.



Click on Next to go on.

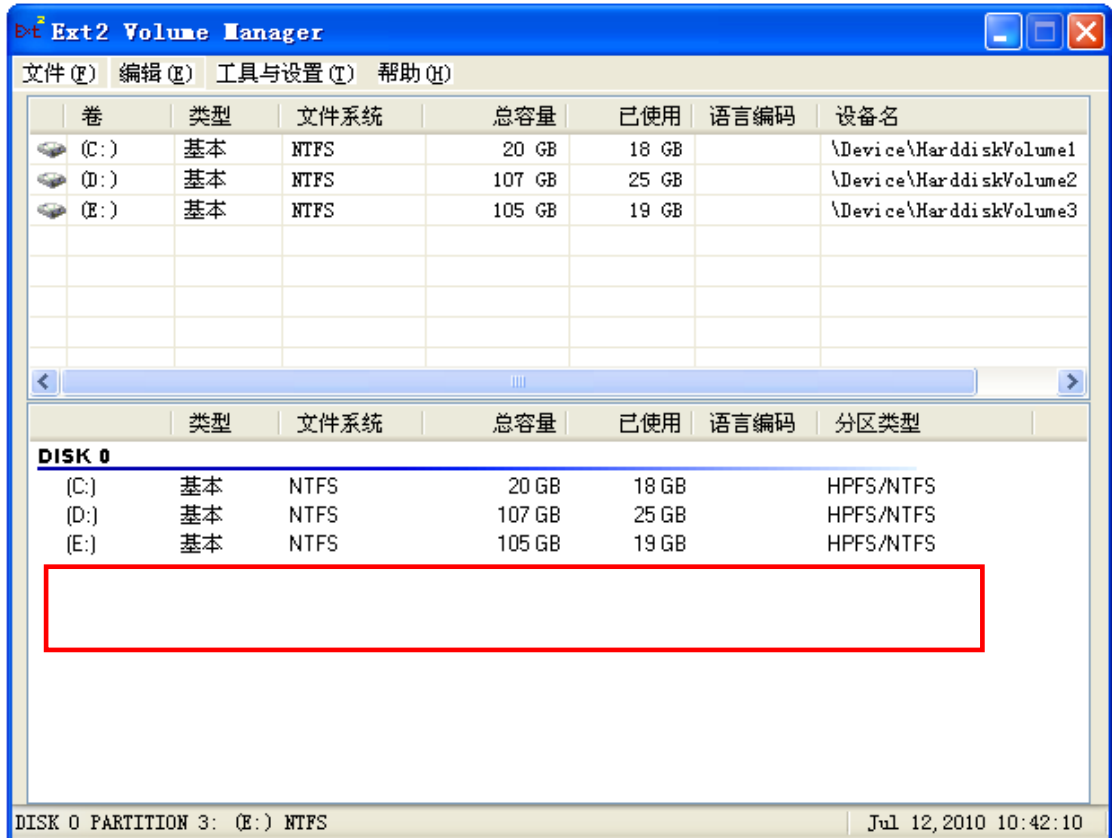
When go to this interface following, please choose the one last two items, tip the first one when required.



Click Next to finish the installation.



When you connect SD card or HDD to your PC, please open the Ext2 Volume Manage program to check whether the PC detects the SD/HDD. If detected, it should be listed out here.

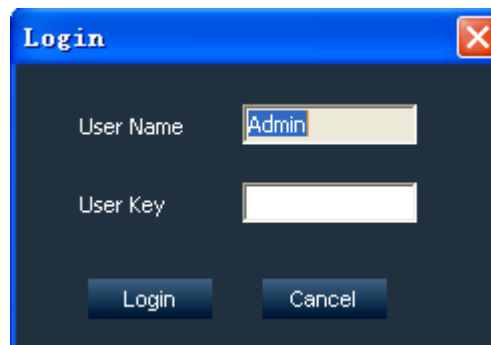


**Remark:** Please restart your PC after the whole installation if you use the PAS for the first time.

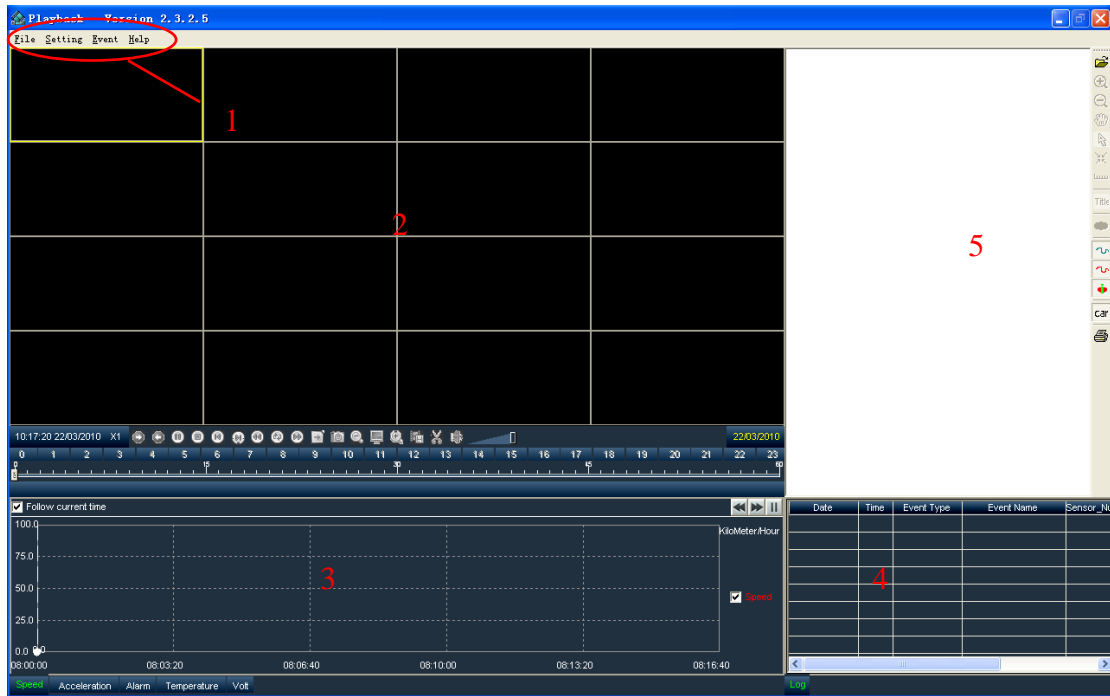
## 2 PAS GUI



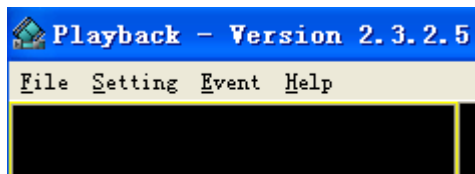
Double click this icon to start the PAS software.



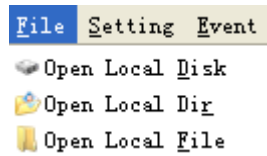
Input the password, the default password is 666666, click Login button and enter into the main interface shown as below:



## 2.1 Main bar



### 2.1.1 File

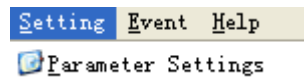


**Open local disk:** choose this item, you can open the HDD or SD card directly. But you need click

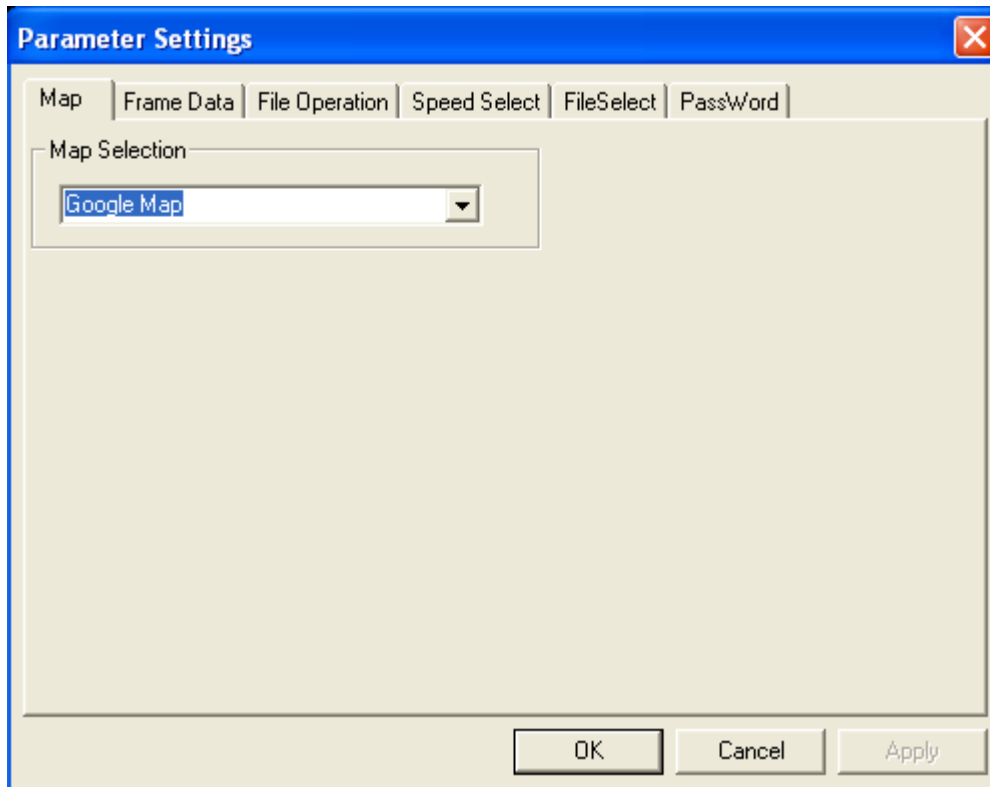
**Open local Dir:** open the one video folder. When you choose one folder, the PAS will start to play back the video automatically, and if only one camera recording, then only one video. If next hour there are four cameras, it will playback four channel synchronously.

**Open local File:** open the single video file.

### 2.1.2 Setting

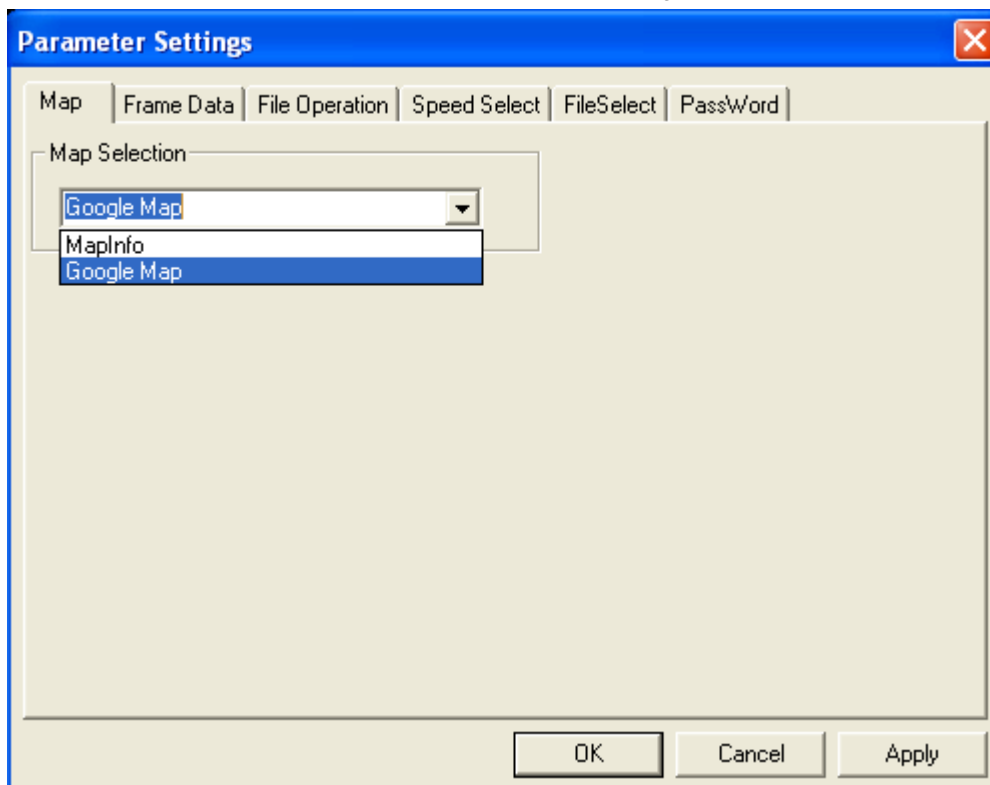


Settings include the Map, Frame Data File Operation, Speed Select, File Select and Password as the below picture.



**(1) Map**

This software can support two kinds of map: MapInfo and Google Map.

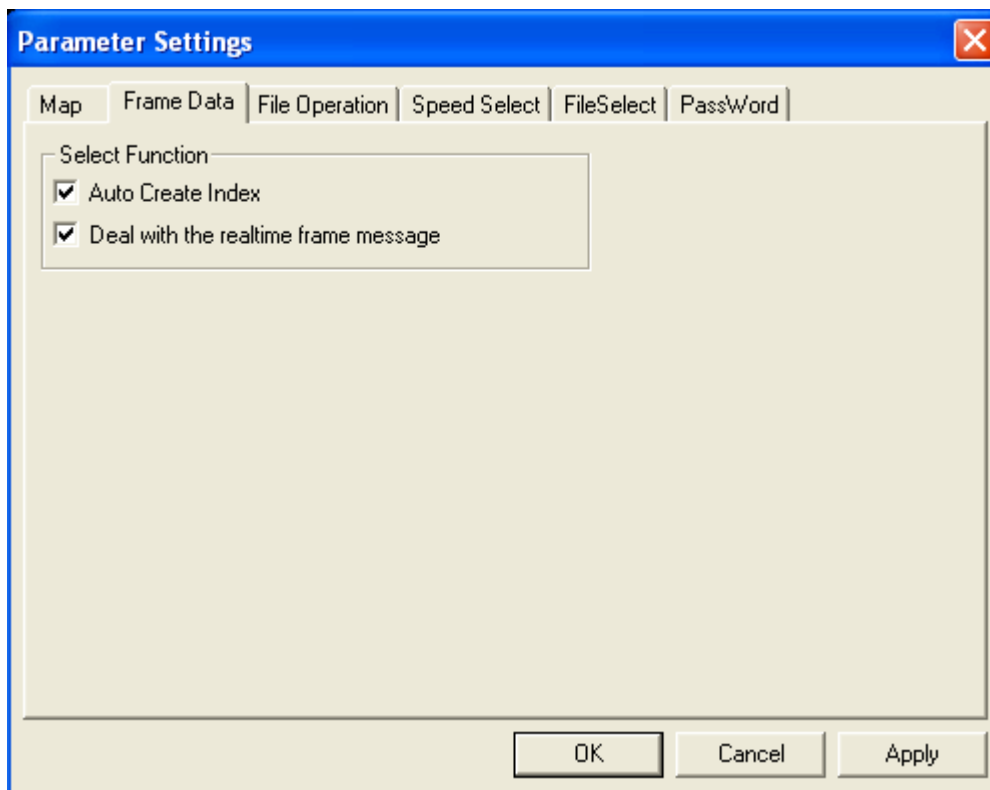


**(2) Frame data**

**Auto Create Index:** This is used to create the index to show the tracking on the map and all the information show in the metadata window.

**Deal with the real time frame message:** this means the PAS will deal with the data in real time

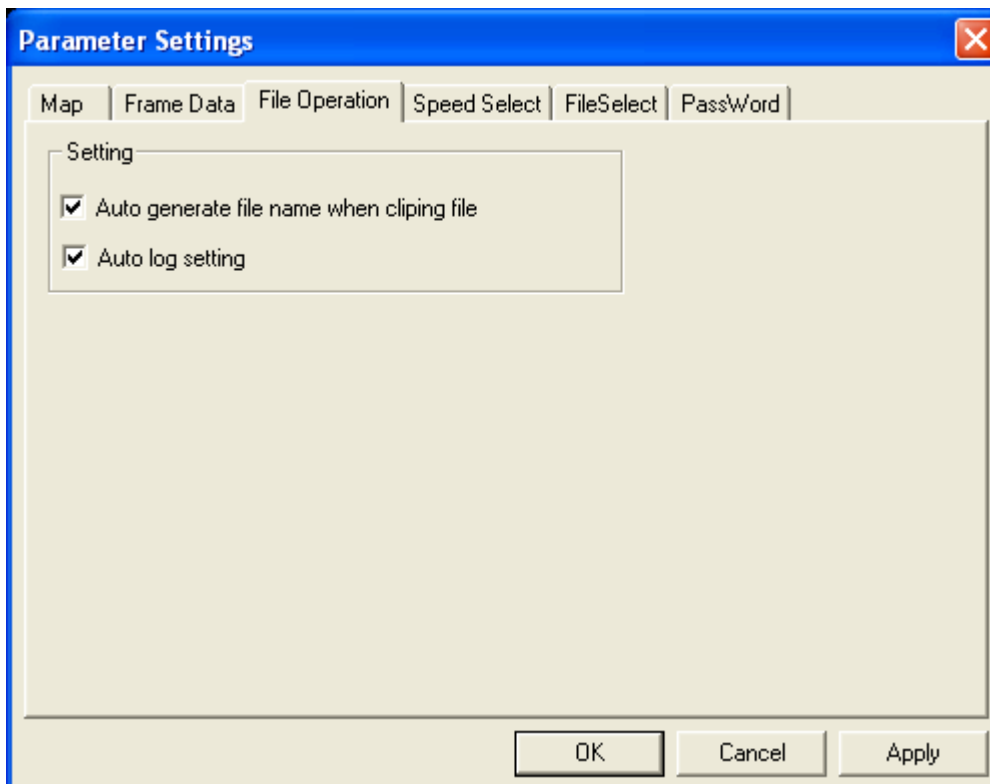
according to the video.



**(3) File operation**

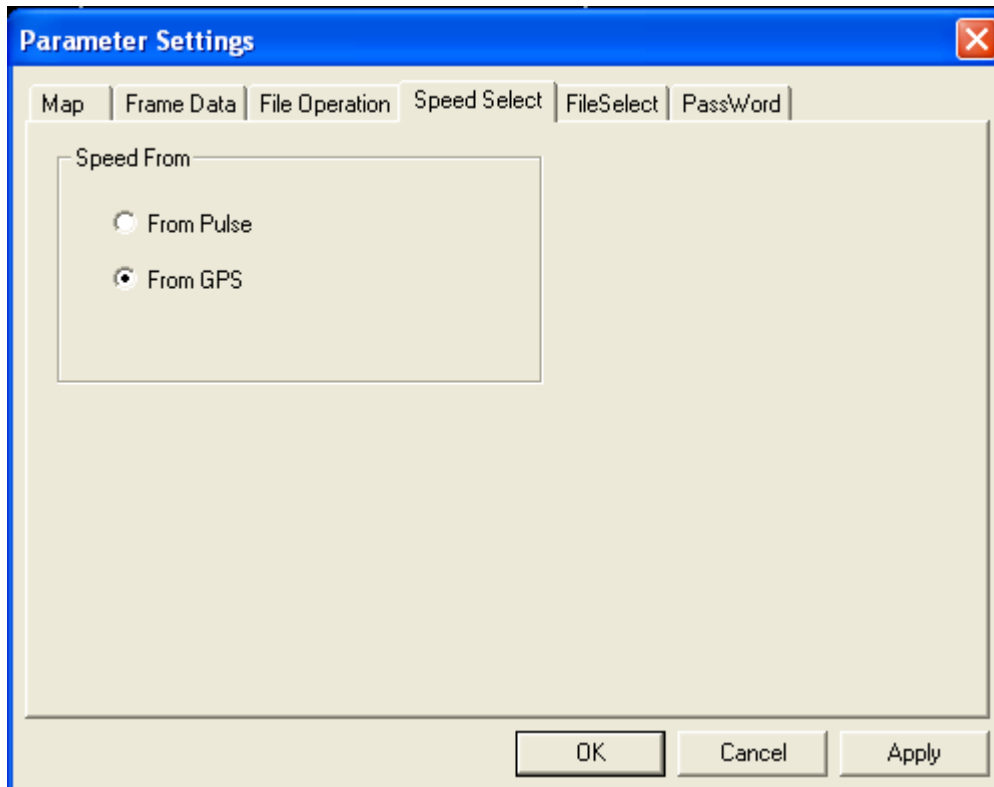
**Auto generate file name when clipping file:** create a file name automatically.

**Auto log setting:** load the log information to the log window automatically.



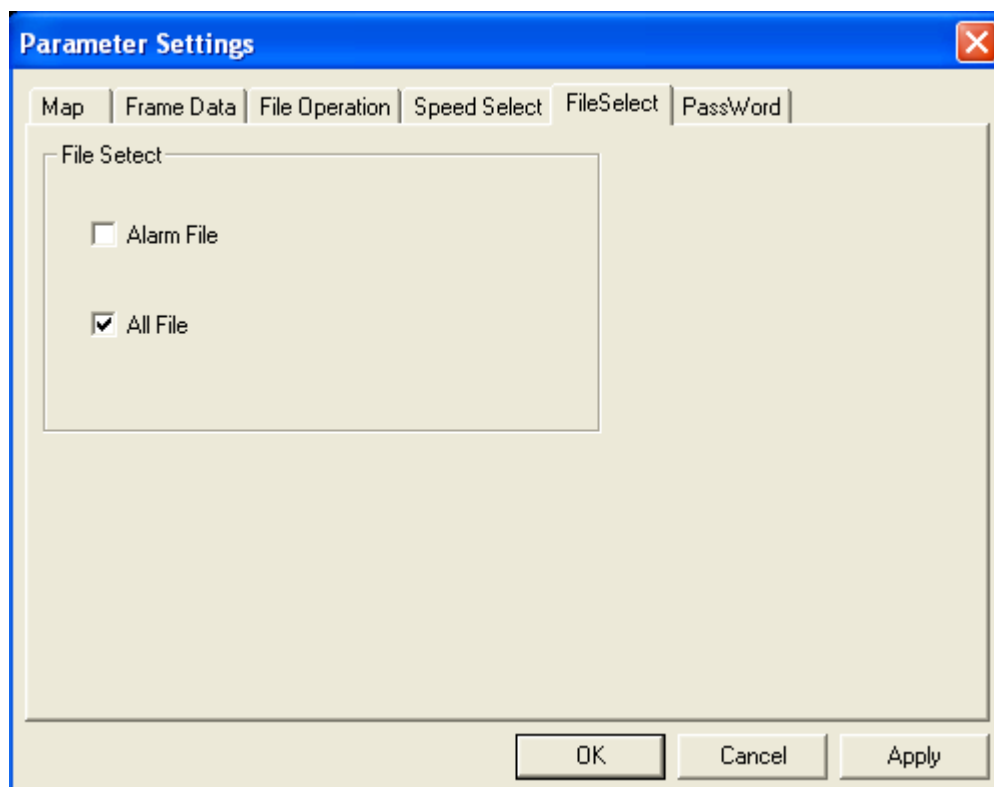
**(4) Speed select**

For the speed, there are two choices, GPS or Pulse. Here please setup this according to the MDVR settings. If on the MDVR, it is GPS, then here you should choose GPS.



**(5) File select**

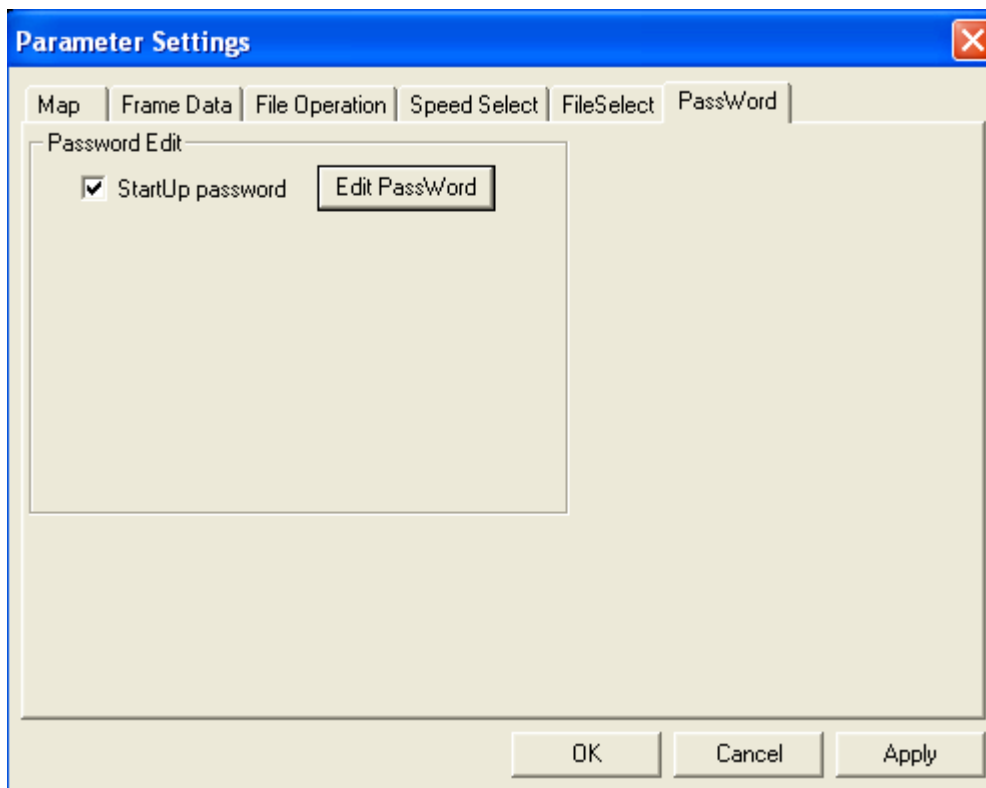
You can only choose one of them: Alarm file or All file.



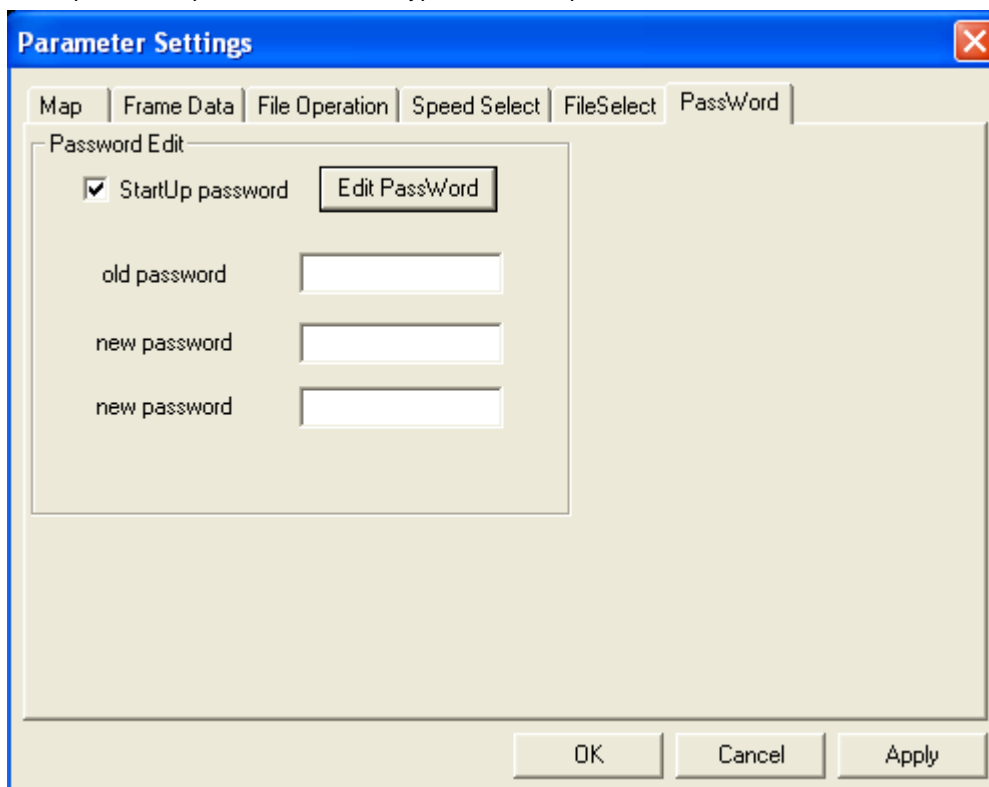
## (6) Password

In this interface you can choose whether use the security system of the PAS, or you can setup the password for this software, so that not everyone can analyze the video file.

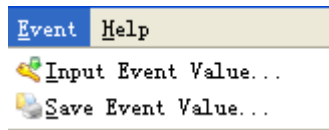
**First:** click Edit Pass Word button to set a new password for this software.



**Second:** Input the old password and then type in the new password for twice.



### 2.1.3 Event



#### Input Event Value;

You can only open the Event Value manually. Choose the right date event log from the HDD/SD card or the log file exported from the MDVR. So that it can show on the right down the interface:

Date	Time	Event Type	Event Name	Sensor_Nu
2010-03-22	10:41:10	Sensor Event	12	2

Log

Now you can see the event log, also you can double click the log item here to play back the video.

**Please be noted that there are only one alarm log file for one day,**

(1) HDD/SD: the log file path: last volume of HDD:\log\event\1005

1005: 10—year; 05—month

When connect the HDD to PC, please choose the Input Event Value to load the event files.

(2)Or you can export the event log from the MDVR to thumb drive:

Insert the USB to the MDVR, and go to SEARCH-EVENT FILE, choose EX LOG



And then open the PAS, and choose Input Event Value to load the events.

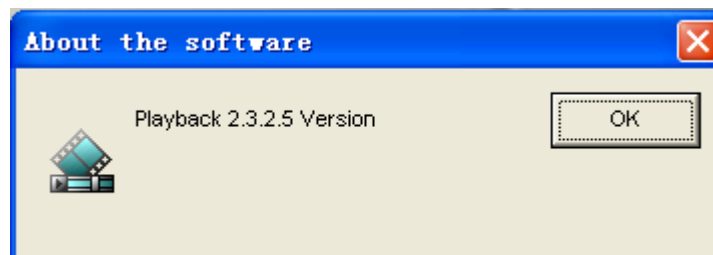
#### Save Event Value:

When there are event on the log window, you can save it as EXCEL file. Please click EVENT—save event value:

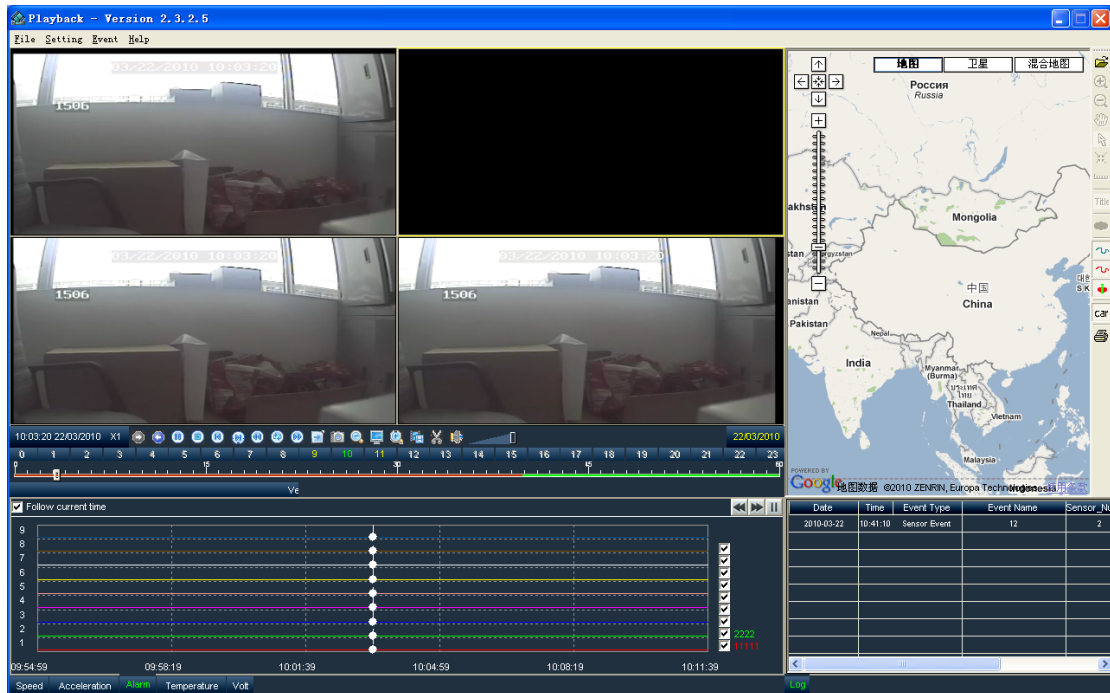
	A	B	C	D	E	F	G	H
1	Date	Time	Event_Type	Event_Name	Sensor_No	OPTCODE	Username	
2	2010-04-30	17:23:11	Sensor Event	PB	1			
3	2010-04-30	17:24:02	Sensor Event	MC	8			
4	2010-04-30	17:25:03	Sensor Event		7			
5	2010-04-30	17:25:48	Sensor Event	EE	6			
6	2010-04-30	17:26:04	Sensor Event	PB	1			
7	2010-04-30	17:26:04	Sensor Event	BB	2			
8	2010-04-30	17:26:04	Sensor Event	11	3			
9	2010-04-30	17:26:04	Sensor Event	44	4			
10	2010-04-30	17:26:04	Sensor Event	55	5			
11	2010-04-30	17:26:04	Sensor Event	EE	6			
12	2010-04-30	17:26:04	Sensor Event		7			
13	2010-04-30	17:26:04	Sensor Event	MC	8			
14	2010-04-30	17:27:16	Sensor Event	PB	1			
15	2010-04-30	17:27:16	Sensor Event	BB	2			
16	2010-04-30	17:27:16	Sensor Event	11	3			
17	2010-04-30	17:27:16	Sensor Event	44	4			
18	2010-04-30	17:27:16	Sensor Event	55	5			
19	2010-04-30	17:27:16	Sensor Event	EE	6			
20	2010-04-30	17:27:16	Sensor Event		7			
21	2010-04-30	17:27:16	Sensor Event	MC	8			
22	2010-04-30	17:28:14	Sensor Event	PB	1			
23	2010-04-30	17:28:14	Sensor Event	BB	2			
24	2010-04-30	17:28:14	Sensor Event	11	3			
25	2010-04-30	17:28:14	Sensor Event	44	4			
26	2010-04-30	17:28:14	Sensor Event	55	5			
27	2010-04-30	17:28:14	Sensor Event	EE	6			
28	2010-04-30	17:28:14	Sensor Event		7			
29	2010-04-30	17:28:14	Sensor Event	MC	8			
30	2010-04-30	17:29:15	Sensor Event	PB	1			
31	2010-04-30	17:29:15	Sensor Event	BB	2			
32	2010-04-30	17:29:15	Sensor Event	11	3			
33	2010-04-30	17:29:15	Sensor Event	44	4			
34	2010-04-30	17:29:15	Sensor Event	55	5			
35	2010-04-30	17:29:15	Sensor Event	EE	6			
36	2010-04-30	17:29:15	Sensor Event		7			

## 2.1.4 Help

Click Help and choose About Playback, it will show you the version number.



## 2.2 Video window



Below the video window, there is a video tool bar.



: click this icon to play forward.



: this icon is used to play backward.



: pause button, click this button to pause the playback.



: stop button, click this button to stop the playback.



: backward frame: click this button to check previous frame.



: Forward frame; click this button to check next frame.



: decrease rate; this is used to down the playback speed.



: normal rate; playback the video file in normal speed.



: increase rate: playback the video file in high speed, when



: next hour:



: photo the appointed window picture with the information and save at the setup path. Shown as

below:



: decrease video window: if you click this icon, the software will close the last window and then show all channels at the largest size.



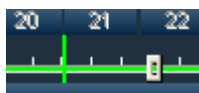
: All video: click this icon to show all the channel video.



: increase video: click this to add the video window one by one.



: Start clip; click this icon to start the clip. When click this icon, there will be one green line on the



progress bar.



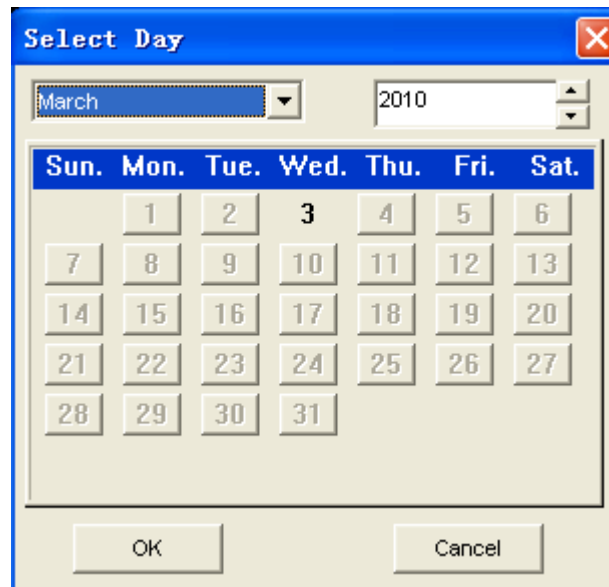
: end clip; after click the start bar, when the file is play to the point needed ( or drag the slider to the point) and then click the end clip icon, it will pop up this follow window.

Time Range						
From:	2010	Year	3	Month	22	Day
	9	Hour	56	Minute	0	Second
To:	2010	Year	3	Month	22	Day
	9	Hour	58	Minute	23	Second
OK Cancel						

And then click OK to setup the save path.

03/03/2010

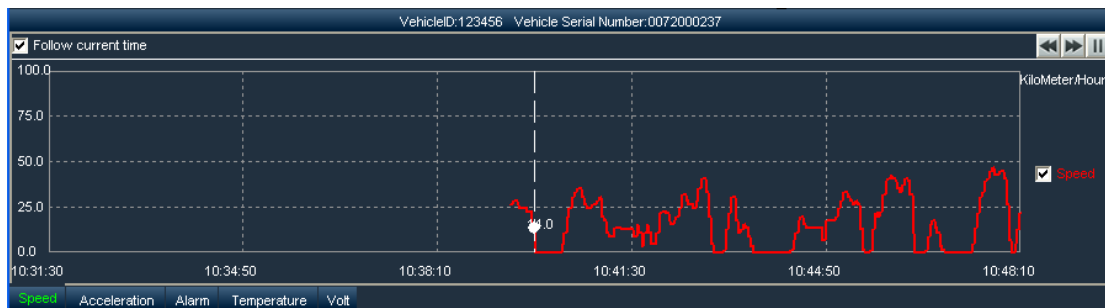
: click this data icon, if the date is black, like 3 , it means there is video file.



! 03/03/2010

: The red mark before the date means the video had been modified, the watermark function on the MDVR. This icon is hidden when the video file is not modified.

## 2.3 Meta data Window



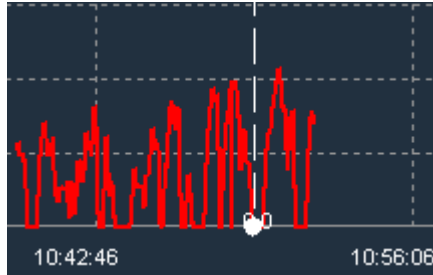
In this window, the user can check the speed, acceleration, Alarm, Temperature and volt graph. Green means the current data.


Follow current time

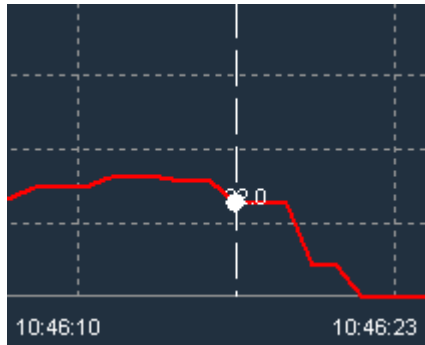
: choose this item, so the graph will move left, and you can see the time below changing. But if you don't choose this item, you can see the white ball and line moving right according to time.



: this icon means zoom out the graph by enlarging the time interval to check the whole curve.



: this icon means zoon in the graph by reducing the time interval to check part of the curve.



## 2.4 Log window

Show the log and the user can double click the log to check the video.

Date	Time	Event Type	Event Name	Sensor_Nu.
2010-03-22	10:41:10	Sensor Event	12	2

Log

## 2.5 Map window

Show the map with GPS location and tracking. And the location will move on the map with the video file



: These icons will be available in MapInfo.



: click this icon to check the track.



: moving tracking line.



: track point, when there is alarm, then on the map there will be the track point, so you can double click the track point to check the video.



: Car center. When the car is move out of the map, it wills re-location the car at the center of the map.

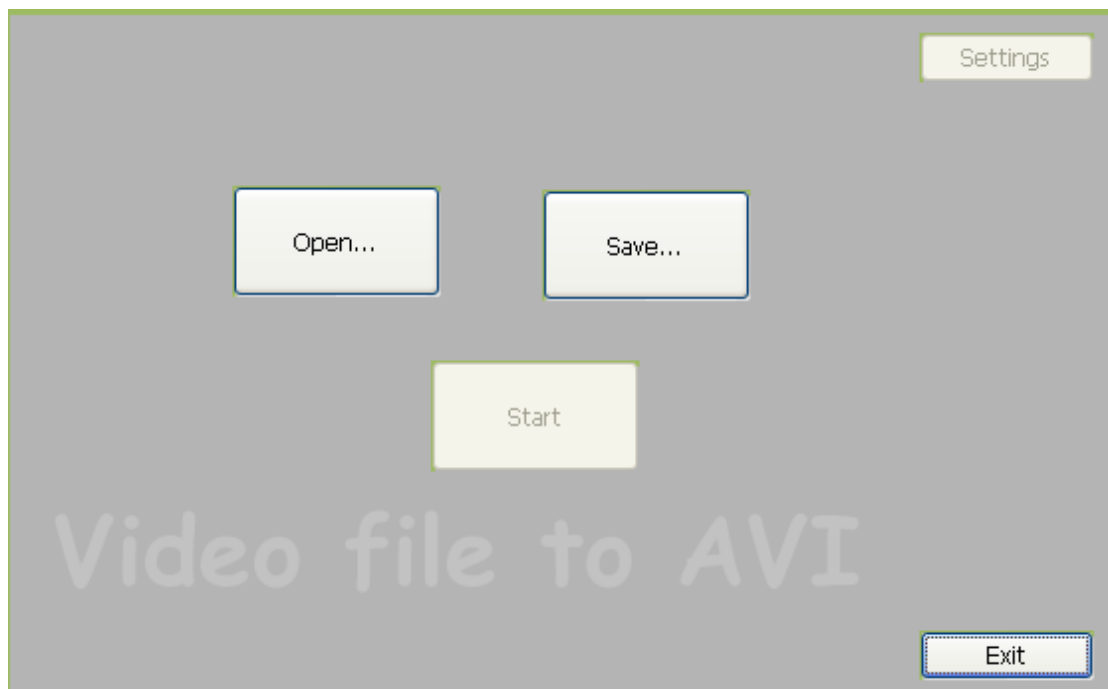
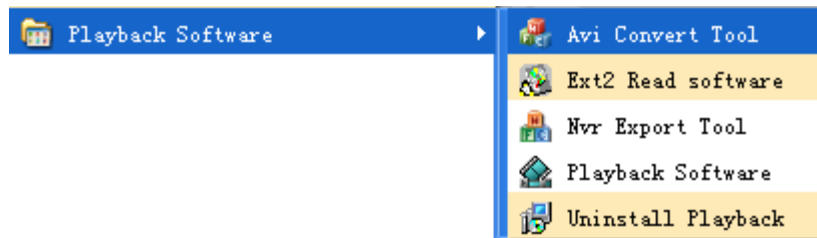


: print, print the map.

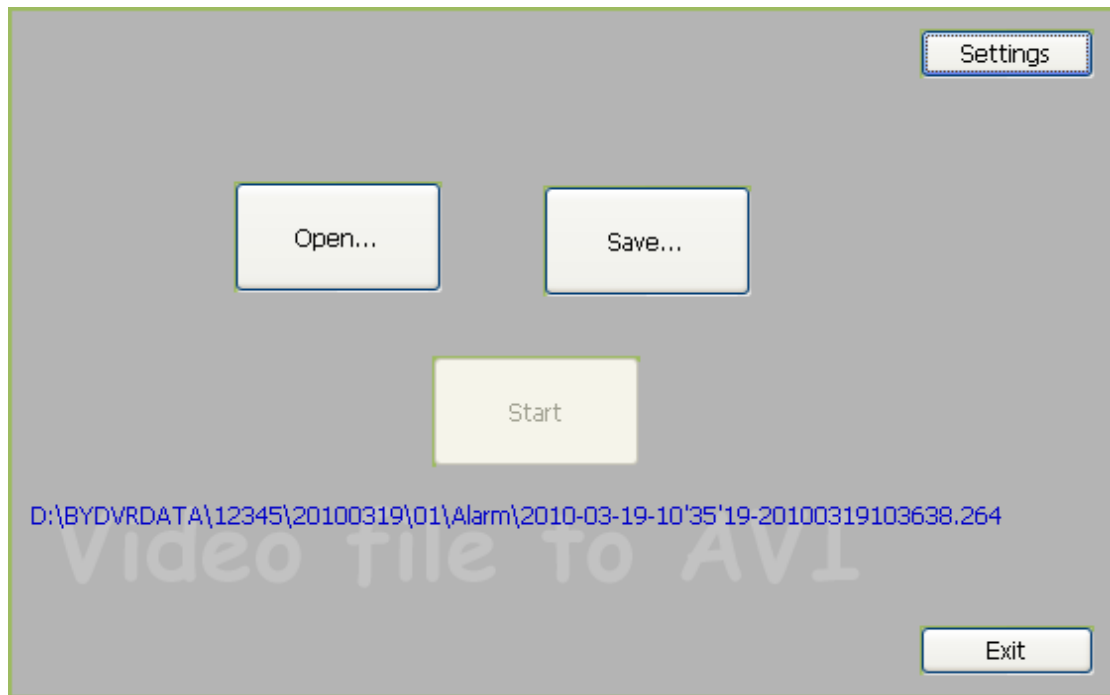
### 3 AVI convert tool

In the PAS, user can convert the NVR or H.264 video file to AVI file, so the video file can be play in the media player and some other player.

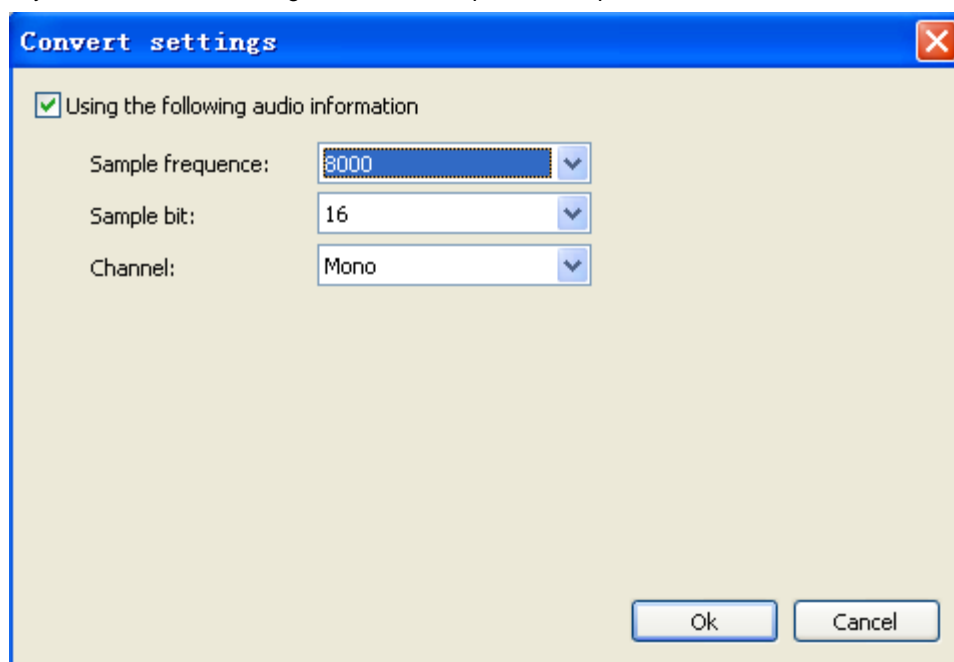
Run the program from Start of your computer



Click "Open" to choose the source file. And it will show you the file path. Shown as below picture:



And also you can click the “Settings” button to setup the audio parameter:



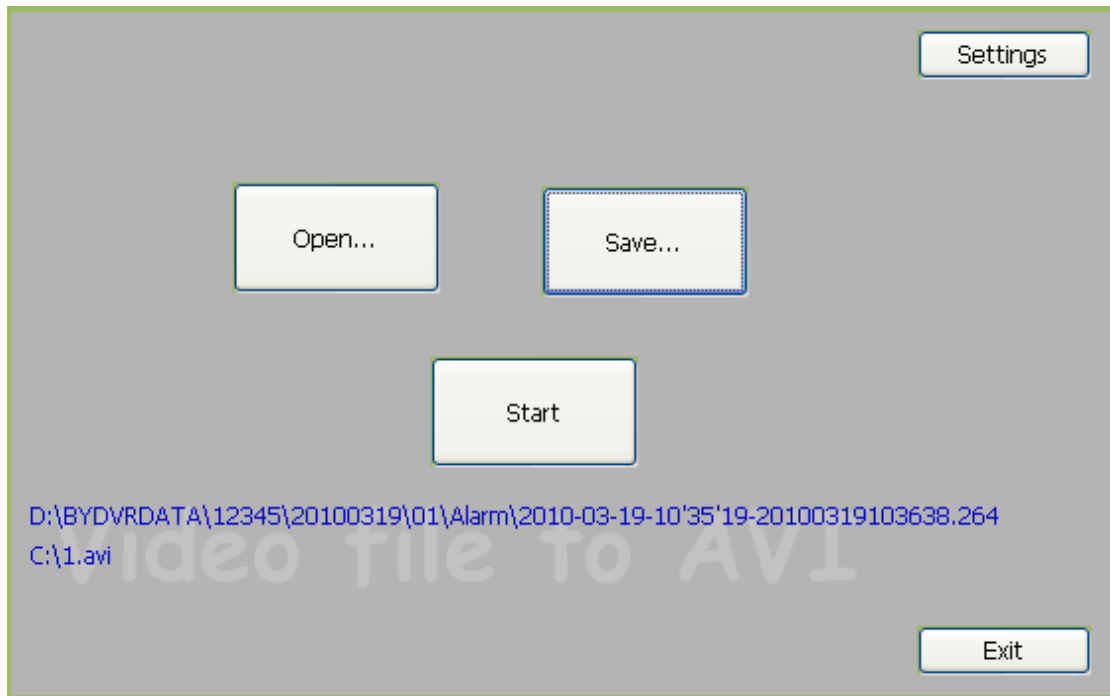
**Sample frequency:** setup the sample frequency.

**Sample bit:** 8 or 16.

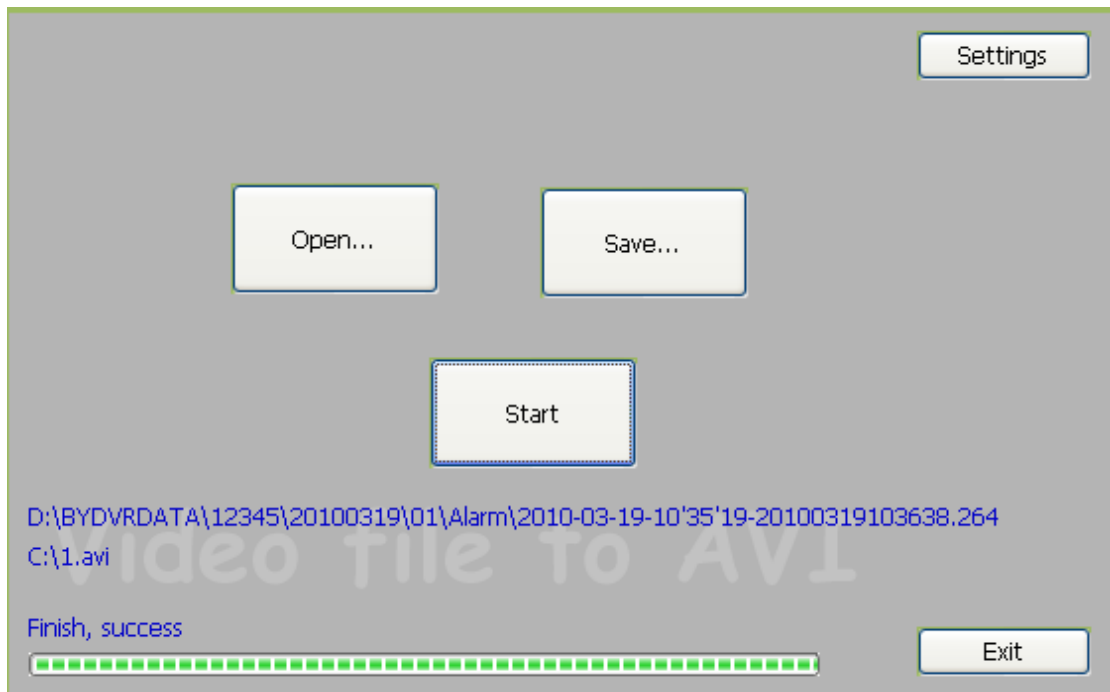
**Channel:** there are two choice, Mono and stereo

**Attention:**  Using the following audio information this item is used for adjusting the voice parameter, please choose this item when convert the video file, otherwise the AVI video file don't have voice, but only noise.

Then click “Save” to setup the path:

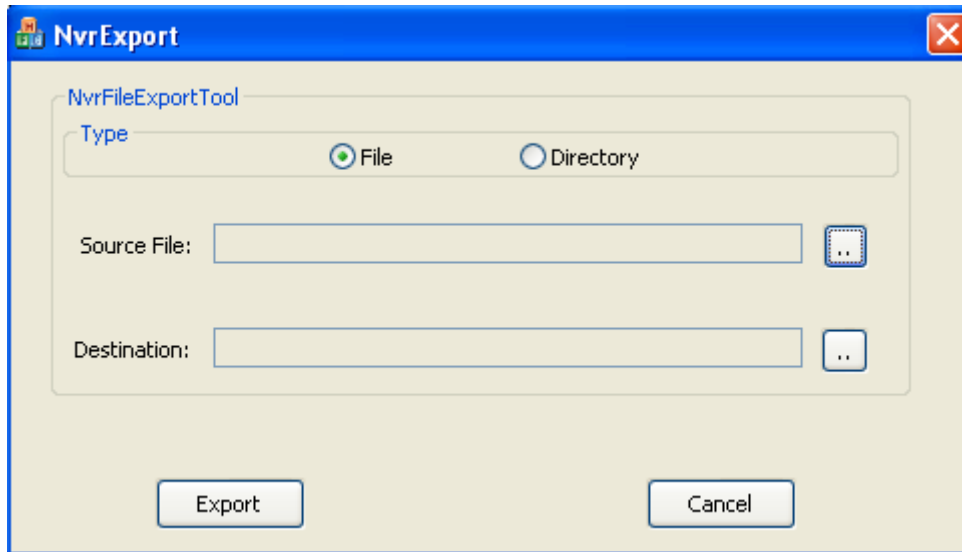


Last, click "Start" to convert.



## 4 NVR Export tool

Use this tool you can export the video file from SD card or HDD easily to save these files.



Choose export type, File or Directory, and then choose the source file and Destination to export the file.